

ITEMIZED

Please note: For Original Matrix order forms, reach us at (800) 986-9319 or email info@matrixseatingusa.com

BACKS

- AIREZ Custom Back (MACB)
 AIREZ Custom Back + ABS-X Shell (MACB) + (MAB-ABS)

CUSHIONS

- AIREZ Custom Seat Cushion (MACSC)
 Auxafoam Custom Seat Cushion (MCSC)

PROVIDER INFORMATION

Account #: _____
 Company Name: _____ Contact Name: _____
 Phone Number: _____ Email: _____
 Mailing Address: _____
 City: _____ State: _____ ZIP: _____
 Shipping Address: _____
 City: _____ State: _____ ZIP: _____

Our seating products must be installed by Matrix Certified Providers and will not be drop shipped to end users.

CLIENT INFORMATION

Client First and Last Name: _____
Client Height: _____ **Client Weight*:** _____
 Wheelchair Make: _____ Model: _____
Frame Width: _____ **Frame Depth:** _____
Seat Base Type: Solid Pan Sling Seat

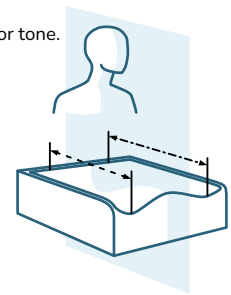
Special Considerations*: High Tone Spasticity

Bold sections indicate required fields.

* Upgrades may be required for clients whose weight exceeds 250 LBS or present with severe spasticity or extensor tone.

MEASUREMENTS

Shoulder Width: _____ Buttocks to Top of Shoulders**:
 Hip Width: _____ Seat Base to Back of Knee, L:
 Seat Base to Back of Knee, R:



** Additional hardware may be required if more than 29" high.

BE SURE TO ALSO INCLUDE

- Photos of the front and side of the client during shape capture.
- Photos of the captured shape.

AIREZ

Matrix AIREZ Custom Back (MACB)

\$2175

For maximum airflow and the lightest weight with strength and rigidity.

Standard configuration includes: an ultra-lightweight adjustable back, lightweight + breathable 3D mesh liner, and a breathable spacer fabric cover.



AIREZ + ABS-X

Matrix AIREZ Custom Back (MACB) + (MAB-ABS)

\$2175 + \$485

The same AIREZ back with an additional ABS-X shell*.

* Required for clients whose back is equal to or taller than 29" or whose weight exceeds 250 lbs or who presents with severe spasticity or extensor tone.

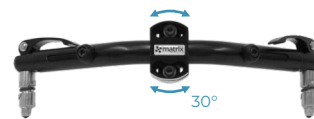


SPECIFY BACK WIDTH (SELECT ONE)

- Standard Trochanter Width <20" (MAB-TSW)
- XL Trochanter Width 21"-24" (MAB-TXLW) \$347

HARDWARE OPTIONS (SELECT ONE)

- Ultra lightweight mounting hardware, mounting width:
 - Frame width: _____" (VTMH) \$395
- Radian 360 mounting hardware, mounting width:
 - Frame width: _____" (RAD) \$595
 - Add additional Radian 360 of same size* (RAD-EX) \$595
- Fixed Pivot mounting hardware, system size**:
- Small - Medium, 4 mounting points (PIV-4) \$866.40
- Large, 6 mounting points (PIV-6) \$1299.60
- Extra Large, 8 mounting points (PIV-8) \$1732.80
- Power Wheelchair Adapter*** (PWA) \$645
For mounting on a solid back.
- Power Wheelchair Bundle*** (PWB) \$495
For use with wheelchair manufacturer's back interface. Includes surface mount hardware, lightweight hardware, and straight bar.
- Omit Hardware (RAD-O)



Ultra Lightweight Mounting Hardware (VTMH)



Radian 360 Hardware (RAD)



Fixed Pivot Hardware (PIV)



Power Wheelchair Adapter (PWA)



Power Wheelchair Hardware Bundle (PWB)

* Required for clients whose back is equal to or taller than 29" or whose weight exceeds 250 lbs or who presents with severe spasticity or extensor tone.

** Requires ABS-X outer shell.

*** Requires 3" of seat depth adjustment to accommodate hardware.





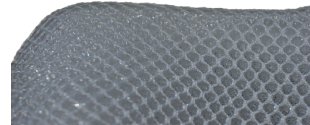
HARDWARE MOUNTING ACCESSORIES

- Cane Claw Hardware - Round Mount (R360-CC) No Charge
- Surface Mount Hardware - Flat Mount (R360-SM) No Charge
- Quick Release Hardware Upgrade (R360-QR) \$95
- Additional Pair of Mounting Clamps
 - Cane Claw (R360-EC) \$230
 - Surface (R360-ES) \$230



OPTIONAL - LINER UPGRADE

- Therapeutic Premium 3D Liner* (AFBU) \$177
- * Recommended for users with compromised skin integrity and/or requiring tilt for pressure relief.



OPTIONAL - ALTERNATIVE BACK COVER

- Replace with Dartex Style Cover (CVRBU-DAR) \$205
- Dartex Style Covers are silver infused for anti-microbial properties and smoother skin contact.



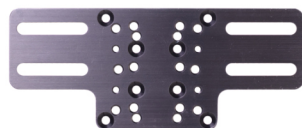
OPTIONAL - ADDITIONAL BACK COVERS

- Additional Spacer Fabric Cover (CVRB-SF) \$345
 - Additional Dartex Style Cover (CVRB-DAR) \$550
 - Additional Incontinence-proof exterior cover* (CVRB-IP) \$250
 - Privacy Flap (MCB-PF) \$150
- * Only recommended for patients with chronic incontinence.



OPTIONAL - BACK ACCESSORIES

- Universal Headrest Mount (CFI-HR) \$175
 - Omit installation (CFI-O) No Charge
 - Accessory Mounting Rails (MCB-IM) \$271
 - Shoulder Harness Guides (MCB-SHG) \$200
 - Omit installation (MCB-O) No Charge



UHM with Accessory Mounting Rails (CFI-HR) + (MCB-IM)



UHM with Accessory Mounting Rails and Shoulder Harness Guides (CFI-HR) + (MCB-IM) + (MCB-SHG)

OPTIONAL - BACK SPECIFICATIONS

If no specifications are selected, the following will be manufactured as captured.

- | | | |
|--|-------------|-------|
| <input type="checkbox"/> Extend patient LEFT lateral thoracic support ____” forward of line | (MCB-EDL-L) | \$290 |
| <input type="checkbox"/> Extend patient RIGHT lateral thoracic support ____” forward of line | (MCB-EDL-R) | \$290 |
| <input type="checkbox"/> Increase patient LEFT lateral thoracic support ____” above line | (MCB-IHL-L) | \$190 |
| <input type="checkbox"/> Increase patient RIGHT lateral thoracic support ____” above line | (MCB-IHL-R) | \$190 |
| <input type="checkbox"/> Extend back height ____” above line | (MCB-EBH) | \$290 |

Cushion products available on following page



AIREZ



Matrix AIREZ Custom Seat Cushion (**MACSC**)
\$2065

Includes a custom-molded AIREZ cushion and breathable spacer fabric cover.

AUXAFOAM



Matrix Custom Seat Cushion (**MCSC**)
\$2065

Includes a custom-molded Auxafoam cushion, breathable spacer fabric cover, and an integrated incontinence-proof interior cover.



WHEELCHAIR SEAT SPECIFICATIONS (SELECT ONE)

Seat Base Type: Solid Pan Sling Seat

SPECIFY SEAT WIDTH (SELECT ONE)

Standard Width 10" - 20"

(SS-W)

Specify Exact Width: _____"

XL Width 21" - 24"

(SS-XL-W)

Specify Exact Width: _____"

Tapered Width

(SC-TW)

Front Width: _____" Back Width: _____"

AIREZ

AUXAFOAM

\$140

\$140

\$145

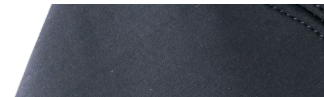
\$145

OPTIONAL - ALTERNATIVE SEAT COVER

Replace with Dartex Style Cover

(CVRSU-DAR) \$95

Dartex Style Covers are silver infused for anti-microbial properties and smoother skin contact.



OPTIONAL - ADDITIONAL SEAT COVERS

Spacer Fabric

(CVRS-SF) \$200

Dartex Style (Smoother Skin Contact)

(CVRS-DAR) \$295

Incontinence-proof **interior** cover with zip*

(CVRSI-IP) \$250

Incontinence-proof **exterior** cover* **

(CVRSE-IP) \$250

* Not recommended for Matrix AIREZ Cushions.

** Only recommended for patients with chronic incontinence.

OPTIONAL - SEAT ACCESSORIES

Integrated Sling Seat Mounting Platform

(SSMP) \$395

*** Recommended for chairs with sling seats only. Not required for chairs with solid pans.

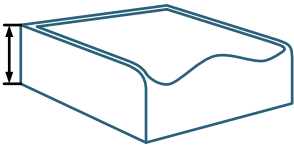
Additional seat options available on following page



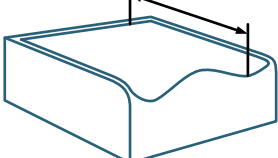
OPTIONAL - SEAT SPECIFICATIONS

If no specifications are selected, the following will be manufactured as captured.

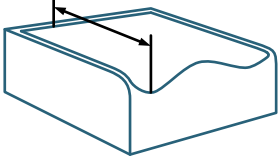
- Modify Seating Height
 - Increase overall height by ____” (SC-THI) \$140
 - As low as possible (SC-THD) \$140



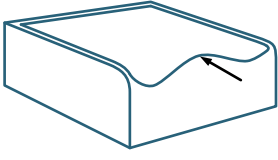
- Modify Length - PATIENT LEFT
 - Longer than shape capture by ____” (SC-CL-ALL) \$140
 - Shorter than shape capture by ____” (SC-CL-ALS) \$140



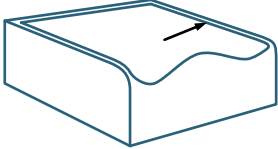
- Modify Length - PATIENT RIGHT
 - Longer than shape capture by ____” (SC-CL-ARL) \$140
 - Shorter than shape capture by ____” (SC-CL-ARS) \$140



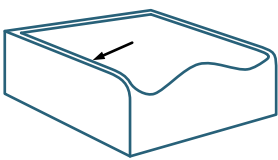
- Modify Medial Thigh Support
 - Eliminate completely (SC-MTE) No Charge
 - Increase height by ____” (SC-MTI) \$110
 - Decrease height by ____” (SC-MTD) \$110



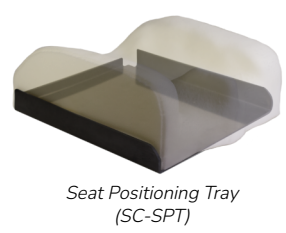
- Modify Lateral Thigh Support - PATIENT LEFT
 - Eliminate completely (SC-LLTE) No Charge
 - Increase height by ____” (SC-LLTI) \$110
 - Decrease height by ____” (SC-LLTD) No Charge



- Modify Lateral Thigh Support - PATIENT RIGHT
 - Eliminate completely (SC-RLTE) No Charge
 - Increase height by ____” (SC-RLTI) \$110
 - Decrease height by ____” (SC-RLTD) No Charge



- Lateral Thigh Support Reinforcement* (SC-LR) \$190
* Increases lateral thigh support rigidity. Applicable to Auxafoam only.
- Soft Spot Adjustment (SC-SS) \$125
Must notate location on shape capture.
- Seat Positioning Tray (SC-SPT) \$350
Fitted tray that allows for repeatable placement of cushion to ensure correct positioning.



Thank you for choosing Matrix Seating USA

ADDITIONAL COMMENTS OR INSTRUCTIONS



Hardware Guide

ULTRA LIGHTWEIGHT MOUNTING HARDWARE

- The Matrix Ultra lightweight hardware is the lightest hardware Matrix Seating USA offers. While extremely lightweight and low profile, it has limited adjustability to and from the client and limited rotation on the X and Y axes. Height adjustment is achieved through adjusting the clamp receivers on the canes. It is typically used for mounting to self-propelled manual wheelchairs.



RADIAN 360

- Matrix Radian 360 offers the greatest level of adjustability and strength. As the name suggests, the Radian 360's ball and socket configuration enables an infinite level of adjustability. It is typically used for mounting to tilt in space wheelchairs and power wheelchairs with available canes.



FIXED PIVOT HARDWARE

- Fixed pivot hardware is available for mounting non-traditional seating components. Examples include: seating systems that have the back and seat combined, supine positioning systems mounted to a tilt in space wheelchair, or creative mounting solutions for backs with extreme curvature. Fixed pivot hardware requires the ABS-X outer shell upgrade.



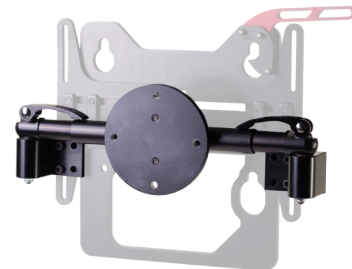
POWER WHEELCHAIR ADAPTER

- The Power Wheelchair Adapter (PWA) is the primary solution for mounting to powered wheelchairs with solid backs 7" or wider via (4) bolts. The PWA allows for rotation and X/Y axis adjustability to enable easy client positioning after initial installation while using under 3" of seat depth.



POWER WHEELCHAIR BUNDLE

- The Power Wheelchair Bundle (PWB) is utilized for mounting to powered wheelchairs without canes or with solid backs with cut-outs that does not enable the Powered Wheelchair Adapter to be utilized. Paired with the VTMH-S straight horizontal mounting shaft and R360-SM surface mount receivers, the hardware is mounted on available surfaces 10" or greater between the canes via (8) bolts, (4) in each surface mount receiver using under 2.5" of seat depth.



Recommendations by wheelchair type

MANUAL WHEELCHAIRS

- AIREZ Back
 - Lightest weight option with full airflow benefits.
- Ultra Lightweight Hardware
 - Lightest mounting solution with appropriate adjustability for most use cases.
- AIREZ Cushion
 - Lightest weight option with superior airflow benefits and increased user comfort.
- Spacer Fabric Covers
 - Enables the greatest airflow benefits AIREZ has to offer.

POWER WHEELCHAIRS (PWC)

- *Options based on wheelchair mounting type:*
 - PWC w/ canes; Radian 360
 - No seat depth adjustment required.
 - PWC w/ solid back; Power Wheelchair Adapter
 - Increases require 3" seat depth to accommodate hardware.
- *Cover selection depending on cushion type:*
 - AIREZ; Spacer Fabric Cover
 - Enables the greatest airflow benefits AIREZ has to offer.
 - Auxafoam Seat; Dartex or Spacer Fabric with fluid proof liner
 - Fluid proof liner protect foam cushion from moisture.

TILT IN SPACE WHEELCHAIRS

- AIREZ Back + Therapeutic Premium 3D liner
- ABS-X outer shell
 - Increases levels of inner shell shape adjustability, rigidity for extreme tone/spasticity and adds easily accessible mounting points for chest straps and other accessories.
- Radian 360 Hardware
 - Greater adjustability options for wheelchair mounting.
- *Does the client possess sensitive skin?*
 - Yes; Dartex Style cover (smooth)
 - Especially useful for clients who are diaper-only with leg exposure to seating surface.
 - No; Spacer Fabric cover
 - Helps to maintain patient positioning and AIREZ's airflow benefits.

