

ITEMIZED

Please note: Original Matrix order forms can be provided by either calling us at (800) 986-9319 or by emailing a request to info@matrixseatingusa.com.

Backs

AIREZ Custom Back (MACB)

Cushions

AIREZ Custom Seat Cushion (MACSC)

Auxafoam Custom Seat Cushion (MCSC)

PROVIDER INFORMATION

Account #: _____

Company Name: _____ Contact Name: _____

Phone Number: _____ Email: _____

Mailing Address: _____

City: _____ State: _____ ZIP: _____

Shipping Address: _____

City: _____ State: _____ ZIP: _____

Our seating products must be installed by Matrix Certified Providers and will not be drop shipped to end users.

CLIENT INFORMATION

Client First and Last Name: _____

Client Height: _____ **Client Weight*:** _____

Wheelchair Make: _____ Model: _____

Frame Width: _____ **Frame Depth:** _____

Bold sections indicate required fields.

**Upgrades may be required for clients over 250 LBS.*

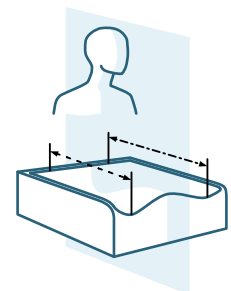
MEASUREMENTS

Shoulder Width: _____ Buttocks to Top of Shoulders**: _____

Hip Width: _____ Seat Base to Back of Knee, L: _____

Seat Base to Back of Knee, R: _____

****Additional hardware may be required if more than 29" high.**



BE SURE TO ALSO INCLUDE

- Photos of the front and side of the client during shape capture.
- Photos of the captured shape.

AIREZ

Matrix AIREZ Custom Back

(MACB)

\$2175

Standard configuration includes: an ultra-lightweight adjustable back, lightweight + breathable 3D mesh liner, and a breathable spacer fabric cover.

SPECIFY BACK WIDTH (SELECT ONE)

- Standard Trochanter Width <20" (MAB-TSW)
- XL Trochanter Width 21"-24" (MAB-TXLW) \$347

ADDITIONAL REINFORCEMENT

- Add ABS-X outer shell* (MAB-ABS) \$485

* Required for clients whose back is equal to or taller than 29" or whose weight exceeds 250 lbs or who presents with severe spasticity or extensor tone.



HARDWARE OPTIONS (SELECT ONE)

- Ultra lightweight mounting hardware, mounting width:
 - Small, 10" - 14" Straight Bar (VTMH-S) \$395
 - Medium, 15" - 18" (VTMH-M) \$395
 - Large, 19" - 21" (VTMH-L) \$395
 - Extra Large, 22" - 24" (VTMH-XL) \$395
- Radian 360 mounting hardware, mounting width:
 - Small, 10" - 14" (RAD-S) \$595
 - Medium, 15" - 18" (RAD-M) \$595
 - Large, 19" - 21" (RAD-L) \$595
 - Extra Large, 22" - 24" (RAD-XL) \$595
 - Add additional Radian 360 of same size* (RAD-EX) \$595
- Fixed Pivot mounting hardware, system size**:
 - Small - Medium, 4 mounting points (PIV-4) \$866.40
 - Large, 6 mounting points (PIV-6) \$1299.60
 - Extra Large, 8 mounting points (PIV-8) \$1732.80
- Omit Hardware (RAD-O)

**Requires optional ABS-X outer shell.



HARDWARE MOUNTING ACCESSORIES

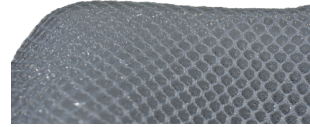
- Cane Claw Hardware - Round Mount (R360-CC) No Charge
- Surface Mount Hardware - Flat Mount (R360-SM) No Charge
- Quick Release Hardware Upgrade (Radian 360, Lightweight H.W.) (R360-QR) \$95
- Additional Pair of Mounting Clamps
 - Cane Claw (R360-EC) \$230
 - Surface (R360-ES) \$230



OPTIONAL - LINER UPGRADE

- Therapeutic Premium 3D Liner* (AFBU) \$177

* Recommended for users with compromised skin integrity and/or requiring tilt for pressure relief.



OPTIONAL - ALTERNATIVE BACK COVER

- Replace with Dartex Style Cover (CVRBU-DAR) \$205

Dartex Style Covers are silver infused for anti-microbial properties and smoother skin contact.



OPTIONAL - ADDITIONAL BACK COVERS

- Additional Spacer Fabric Cover (CVRB-SF) \$345
- Additional Dartex Style Cover (CVRB-DAR) \$550
- Additional Incontinence-proof exterior cover* (CVRB-IP) \$250
- Privacy Flap (MCB-PF) \$150

* Only recommended for patients with chronic incontinence.



Spacer Fabric Cover

OPTIONAL - BACK ACCESSORIES

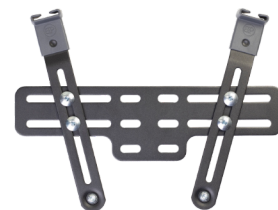
- Universal Headrest Mount (CFI-HR) \$175
 - Omit installation (CFI-O) No Charge
 - Accessory Mounting Adapter (MCB-IM) \$271
 - Shoulder Harness Guides (MCB-SHG) \$200
 - Omit installation (MCB-O) No Charge



Universal Headrest Mount



Accessory Mounting Adapter



With Shoulder Harness Guides

OPTIONAL - BACK SPECIFICATIONS

If no specifications are selected, the following will be manufactured as captured.

- Extend patient LEFT lateral thoracic support ____" forward of line (MCB-EDL-L) \$290
- Extend patient RIGHT lateral thoracic support ____" forward of line (MCB-EDL-R) \$290
- Increase patient LEFT lateral thoracic support ____" above line (MCB-IHL-L) \$190
- Increase patient RIGHT lateral thoracic support ____" above line (MCB-IHL-R) \$190
- Extend back height ____" above line (MCB-EBH) \$290

Custom Cushions

(E2609)

AIREZ



Matrix AIREZ Custom Seat Cushion (**MACSC**)
\$2065

Includes a custom-molded AIREZ cushion and breathable spacer fabric cover.



AUXAFOAM



Matrix Custom Seat Cushion (**MCSC**)
\$2065

Includes a custom-molded Auxafoam cushion, breathable spacer fabric cover, and an integrated incontinence-proof interior cover.

SPECIFY SEAT WIDTH (SELECT ONE)

Standard Width 10" - 20"
Specify Exact Width: _____"

(SS-W)

XL Width 21" - 24"
Specify Exact Width: _____"

(SS-XL-W)

Tapered Width
Front Width: _____" Back Width: _____"

(SC-TW)

AIREZ

AUXAFOAM

\$140

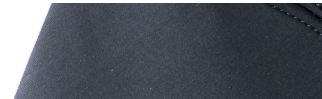
\$140

\$145

\$145

OPTIONAL - ALTERNATIVE SEAT COVER

Replace with Dartex Style Cover (CVRSU-DAR) \$95
Dartex Style Covers are silver infused for anti-microbial properties and smoother skin contact.



OPTIONAL - ADDITIONAL SEAT COVERS

- Spacer Fabric (CVRS-SF) \$200
- Dartex Style (Smoother Skin Contact) (CVRS-DAR) \$295
- Incontinence-proof **interior** cover with zip* (CVRSI-IP) \$250
- Incontinence-proof **exterior** cover* ** (CVRSE-IP) \$250

* Not recommended for Matrix AIREZ Cushions.

** Only recommended for patients with chronic incontinence.

OPTIONAL - SEAT ACCESSORIES

Integrated Sling Seat Mounting Platform*** (SSMP) \$395
*** Not required for Matrix AIREZ Custom Seat Cushion (MACSC).

Additional seat options available on following page

Custom Backs (E2617) + Custom Seat Cushions (E2609)

ITEMIZED





OPTIONAL - SEAT SPECIFICATIONS

If no specifications are selected, the following will be manufactured as captured.

Seating Height

- Increase overall height by ____"
- As low as possible

(SC-THI) \$140

(SC-THD) \$140

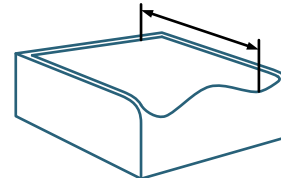


Specify Length - PATIENT LEFT

- Longer than shape capture by ____"
- Shorter than shape capture by ____"

(SC-CL-ALL) \$140

(SC-CL-ALS) \$140

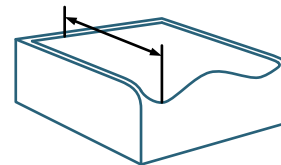


Specify Length - PATIENT RIGHT

- Longer than shape capture by ____"
- Shorter than shape capture by ____"

(SC-CL-ARL) \$140

(SC-CL-ARS) \$140



Medial Thigh Support

- Eliminate completely
- Increase height by ____"
- Decrease height by ____"

(SC-MTE) No Charge

(SC-MTI) \$110

(SC-MTD) \$110



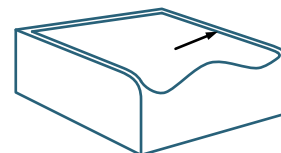
Thigh Lateral Support - PATIENT LEFT

- Eliminate completely
- Increase height by ____"
- Decrease height by ____"

(SC-LLTE) No Charge

(SC-LLTI) \$110

(SC-LLTD) No Charge



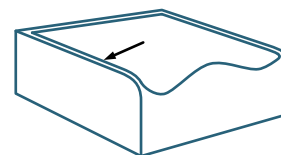
Thigh Lateral Support - PATIENT RIGHT

- Eliminate completely
- Increase height by ____"
- Decrease height by ____"

(SC-RLTE) No Charge

(SC-RLTI) \$110

(SC-RLTD) No Charge



Lateral Thigh Support Reinforcement*

(SC-LR) \$190

* Increases lateral thigh support rigidity. Applicable to Auxafoam only.

Hardware Guide

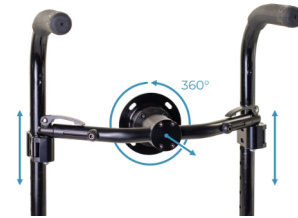
ULTRA LIGHTWEIGHT MOUNTING HARDWARE

- The Matrix Ultra lightweight hardware is the lightest hardware Matrix Seating USA offers. While extremely lightweight and low profile, it has limited adjustability to and from the client and limited rotation on the X and Y axes. Height adjustment is achieved through adjusting the clamp receivers on the canes. It is typically used for mounting to self-propelled manual wheelchairs.
- The Matrix Ultra lightweight hardware is also the best alternative for mounting to wheelchairs with solid backs. Paired with the VTMH-S Straight horizontal mounting shaft and R360-SM surface mount receivers, the hardware is mounted between the canes and bolted to the solid back via (8) bolts, (4) in each surface mount receiver.



RADIAN 360

- Matrix Radian 360 offers the greatest level of adjustability and strength. As the name suggests, the Radian 360's ball and socket configuration enables an infinite level of adjustability. It is typically used for mounting to tilt in space wheelchairs and power wheelchairs with available canes.



FIXED PIVOT HARDWARE

- Fixed pivot hardware is available for mounting non-traditional seating components. Examples include: seating systems that have the back and seat combined, supine positioning systems mounted to a tilt in space wheelchair, or creative mounting solutions for backs with extreme curvature. Fixed pivot hardware requires the ABS-X outer shell upgrade.



Recommendations by wheelchair type

MANUAL WHEELCHAIRS

- AIREZ Back
 - Lightest weight option with full airflow benefits.
- Ultra Lightweight Hardware
 - Lightest mounting solution with appropriate adjustability for most use cases.
- AIREZ Cushion
 - Lightest weight option with superior airflow benefits and increased user comfort.
- Spacer Fabric Covers
 - Enables the greatest airflow benefits AIREZ has to offer.

POWER WHEELCHAIRS (PWC)

- *Options based on wheelchair mounting type:*
 - PWC w/ canes; Radian 360
 - No seat depth adjustment required.
 - PWC w/ solid back 10" or greater; Ultra Lightweight Hardware with small straight bar (VTMH-S) combined with surface mount receivers (R360-SM)
 - Minimal seat depth adjustment required, 2.5" to accommodate hardware.
 - PWC w/ solid back requiring greater mounting adjustability, Radian 360 with surface mount receivers (R360-SM)
 - Increases required seat depth 4" to accommodate hardware.
- *Cover selection depending on cushion type:*
 - AIREZ; Spacer Fabric Cover
 - Enables the greatest airflow benefits AIREZ has to offer.
 - Auxafoam Seat; Dartex/Spacer Fabric with fluid proof liner
 - Fluid proof liner protect foam cushion from moisture.

TILT IN SPACE WHEELCHAIRS

- AIREZ Back + ABS-X Outer Shell
 - ABS-X improves rigidity and enables greater levels of shape adjustability to the inner shell while also providing easier mounting points for chest strap guides and other accessories.
- Radian 360 Hardware
 - Greater adjustability options for wheelchair mounting.
- *Does the client possess sensitive skin?*
 - Yes; Dartex Style cover (smooth)
 - Especially useful for clients who are diaper-only with leg exposure to seating surface.
 - No; Spacer Fabric cover
 - Helps to maintain patient positioning and AIREZ's airflow benefits.

