

# Hardware Guide

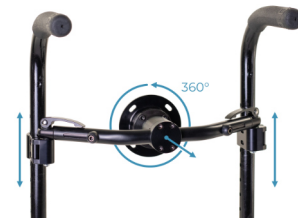
## ULTRA LIGHTWEIGHT MOUNTING HARDWARE

- The Matrix Ultra lightweight hardware is the lightest hardware Matrix Seating USA offers. While extremely lightweight and low profile, it has limited adjustability to and from the client and limited rotation on the X and Y axes. Height adjustment is achieved through adjusting the clamp receivers on the canes. It is typically used for mounting to self-propelled manual wheelchairs.



## RADIAN 360

- Matrix Radian 360 offers the greatest level of adjustability and strength. As the name suggests, the Radian 360's ball and socket configuration enables an infinite level of adjustability. It is typically used for mounting to tilt in space wheelchairs and power wheelchairs with available canes.



## FIXED PIVOT HARDWARE

- Fixed pivot hardware is available for mounting non-traditional seating components. Examples include: seating systems that have the back and seat combined, supine positioning systems mounted to a tilt in space wheelchair, or creative mounting solutions for backs with extreme curvature. Fixed pivot hardware requires the ABS-X outer shell upgrade.



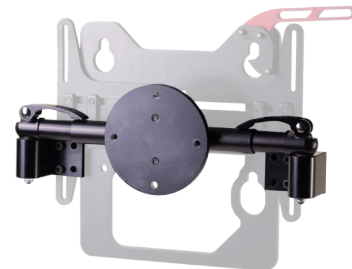
## POWER WHEELCHAIR ADAPTER

- The Power Wheelchair Adapter (PWA) is the primary solution for mounting to powered wheelchairs with solid backs 7" or wider via (4) bolts. The PWA allows for rotation and X/Y axis adjustability to enable easy client positioning after initial installation while using under 3" of seat depth.



## POWER WHEELCHAIR BUNDLE

- The Power Wheelchair Bundle (PWB) is utilized for mounting to powered wheelchairs without canes or with solid backs with cut-outs that does not enable the Powered Wheelchair Adapter to be utilized. Paired with the VTMH-S straight horizontal mounting shaft and R360-SM surface mount receivers, the hardware is mounted on available surfaces 10" or greater between the canes via (8) bolts, (4) in each surface mount receiver using under 2.5" of seat depth.



# Recommendations by wheelchair type

## MANUAL WHEELCHAIRS

- AIREZ Back
  - Lightest weight option with full airflow benefits.
- Ultra Lightweight Hardware
  - Lightest mounting solution with appropriate adjustability for most use cases.
- AIREZ Cushion
  - Lightest weight option with superior airflow benefits and increased user comfort.
- Spacer Fabric Covers
  - Enables the greatest airflow benefits AIREZ has to offer.

## POWER WHEELCHAIRS (PWC)

- *Options based on wheelchair mounting type:*
  - PWC w/ canes; Radian 360
    - No seat depth adjustment required.
  - PWC w/ solid back; Power Wheelchair Adapter
    - Increases require 3" seat depth to accommodate hardware.
- *Cover selection depending on cushion type:*
  - AIREZ; Spacer Fabric Cover
    - Enables the greatest airflow benefits AIREZ has to offer.
  - Auxafoam Seat; Dartex or Spacer Fabric with fluid proof liner
    - Fluid proof liner protect foam cushion from moisture.

## TILT IN SPACE WHEELCHAIRS

- AIREZ Back + Therapeutic Premium 3D liner
- ABS-X outer shell
  - Increases levels of inner shell shape adjustability, rigidity for extreme tone/spasticity and adds easily accessible mounting points for chest straps and other accessories.
- Radian 360 Hardware
  - Greater adjustability options for wheelchair mounting.
- *Does the client possess sensitive skin?*
  - Yes; Dartex Style cover (smooth)
    - Especially useful for clients who are diaper-only with leg exposure to seating surface.
  - No; Spacer Fabric cover
    - Helps to maintain patient positioning and AIREZ's airflow benefits.

